

( )

\*

:

/

XVIII XVII XVI I

XIV II

:

∴

\*

E.mail : [hatam25@hotmail.com](mailto:hatam25@hotmail.com)

( ) (Robinson)

(Schistosomiasis)

x

.( )

( Dithiothritol )

(Amino coproic

EDTA

acid)

(Freezing and thawing)

.( )

.( )

(Sargeaunt)

PAGE

(HK (GPI E.C. 5 3 1 9)

(Discontinious Poly Acrylamaide  
Gel Electrophoresis)

(ME E.C 1 1 1 40) E.C 2 7 1 1)

(PGM E.C 2 7 5 1)

Bio rad (Cat.No.#165-3301)

Separating

(Stucking)

Stucking

.( )

)

$\alpha$

$\beta$

(

.( )

+

/

(MTT)

---

(PMS)

( )

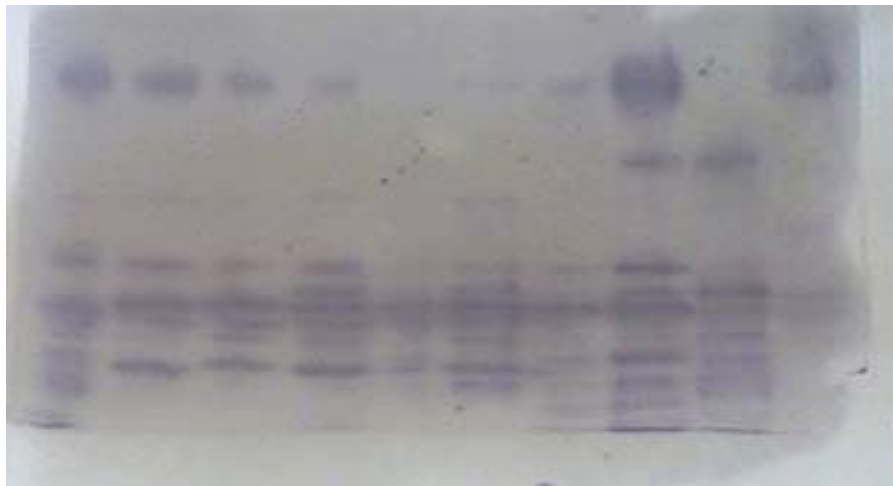
:

( )

:

:

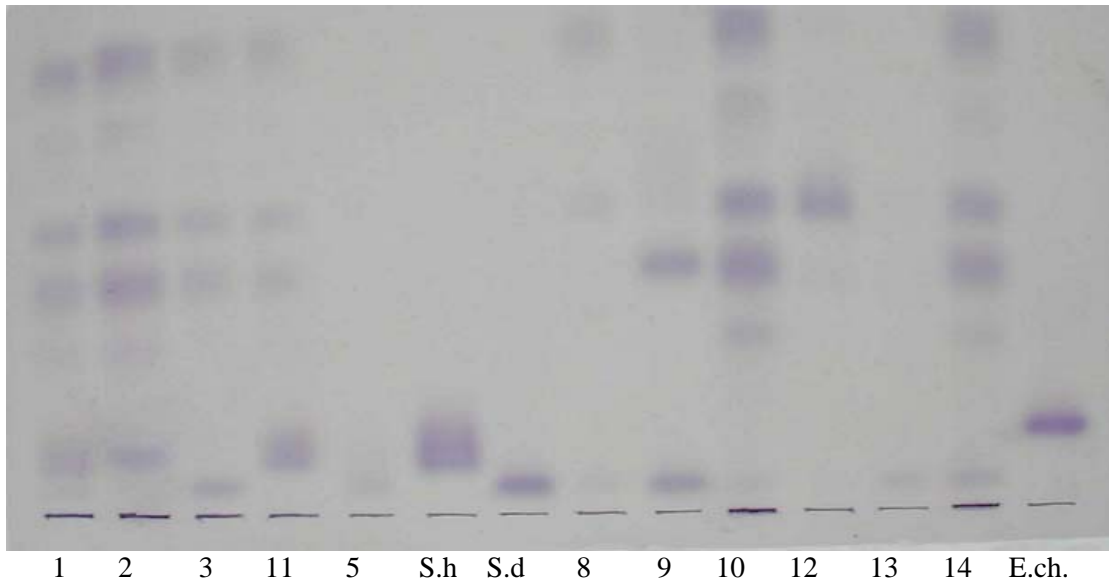
23 19 18 17 Bac. 16 13 12 11 10



(GPI)

:

**Bac. = Bacterial sample.**



(PGM)

:

S.h = Standard of *Entamoeba histolytica*  
 S.d = Standard of *Entamoeba dispar*  
 E.ch. = *Entamoeba chatton*

:

M	-	-	-	-	-	-	-	-	-	-	-	-
H			-	-		-	-	-				-
K			-	-		-	-	-				-
P												
G												
M	-	-						-				-
G												
P		-				-	-					
I	-	-	-	-	-	-	-	-	-	-	-	-
Z	I	XVI	I	*	*	XVII	XVII	II	XVII	II	XVII	
N	13	14	15	16	17	18	19	20	21	22	23	

M	-			-	-	-	-				-	-	
H	-			-	-	-	-	-	-	-	-	-	-
K	-			-	-	-	-	-	-	-	-	-	-
P													
G													
M	-	-											
G													
P													
I	-	-	-	-	-	-	-	-	-	-	-	-	-
Z	II	II	XVII	II	XVII	XVII	I	I	I	XVIII	XIV	XVI	
N	1	2	3	4	5	6	7	8	9	10	11	12	

HK PGM

=\*

-

(XIV)

(II)

(XVIII) (XVII) (XVI) (I)

( )

GPI

RM= /

RM= /

RM = / /

PGM

GPI

( )

PGM

HK

(Hrs-S)

HK

( )

PGM

GPI

(% / ) (I)

(XVII)

(% )(XVI)

(HM- :

(% ) (XVIII)

(% )

(AS-16)

1) (Z=19),(Z=14)

Keio

(% ) (II)

XIV

( )

.

.

( )

## References :

1. Gonzalez-Ruiz A, Haque R, Rhman T, et al.. Diagnosis of amebic dysentery by detection of *Entamoeba histolytica* fecal antigen by an invasive strain specific monoclonal antibody –based enzyme linked immunosorbent assay. *J Clin Microbiol* 1994; 32: 964-970.
2. Bhattacharya A, Satish S, Baghi A, et al. The genome of *Entamoeba histolytica*. *Inter J Parasitol* 2000; 30:401-410.
3. World Health Organization. Amoebiasis. *W.H.O Weekly Epidemiol Rec* 1997; 72:97-100.
4. Bavej UK, Francis S, Kaura M, et al. The Zymodemes of *Entamoeba histolytica* in New Delhi, India. *J Diarrhoeal Dis* 1990; 8:27-30.
5. Sargeant PG. Zymodemes expressing possible genetic exchange in *Entamoeba histolytica*. *Trans R Soc Trop Med Hyg* 1985; 79:86-9.
6. Sargeant PG, Williams JE, Grene JD. The differentiation of invasive and noninvasive *Entamoeba histolytica* by isoenzyme electrophoresis. *Trans Royal Soc Trop Med Hyg* 1978 ;72:437.
7. Robinson GL. The Laboratory diagnosis of human parasitic amoeba. *Trans R Soc Trop Med Hyg* 1968; 62 : 285- 94.
8. Haque R, Ali IKM, Akther S, et al. Comparison of PCR Isoenzyme analysis and antigen detection for diagnosis of *Entamoeba histolytica* infection. *J Clin Microbiol* 1998 ;36:449-52.
9. (HSr+S)  
)
10. Gathiram V, Jackson TFHG. A longitudinal study of asymptomatic carriers of pathogenic zymodemes of *Entamoeba histolytica*. *S Afr Med J* 1987; 72:669-672.