



() -

*

NCHS

< SD

(National Centre for Health Statistics)

(BMI)

BMI () /

()

()

:

/// : // :

*

Email: vaheedy@yahoo.com

.()

(Undernutrition)
. () (Overnutrition)

.()

.()

.()

.()

/

(Underweight :) .()

(Stunting :)

(Wasting :)

[Body Mass Index =(kg/(m)] .() (

.()

NCHS

SD

(National Centre for Health Statistics)

/

()
 NCHS
 BMI
 ()
 BMI
 / ± /
 BMI
 ()
 (> SD)
 > SD) (> SD)
 BMI
 BMI
 /
 (Protein Energy Malnutrition)
 ()
 SPSS
 (SPSS Inc., Chicago, IL, USA)
 (Student t-test)
)
 () :

| () | | () | | () | |
|-------|------|-------|------|-------|------|
| >+ SD | < SD | >+ SD | < SD | >+ SD | < SD |
| / | / | / | / | / | / |
| / | / | / | / | / | / |
| / | / | / | / | / | / |
| / | / | / | / | / | / |
| / | / | / | / | / | / |
| / | / | / | / | / | / |
| / | / | / | / | / | / |
| / | / | / | / | / | / |
| / | / | / | / | / | / |

()
 ۲-۶
 ۷-۱۲
 ۱۳-۲۰

BMI

(/ <BMI< /)

(BMI)

/

(BMI ≤ /)

()

/

(/ /)

(/)

BMI

()

() :

() /

(BMI)

(<BMI< /) PEM

/ (BMI<) PEM

BMI

()

> > <

() / (<BMI<)

(<BMI< /)

(/) (/) (/) (/)*

(BMI ≥)

(/) (/) (/) (/)

(/) (/) (/) (/)

BMI

/) :

()

/) (/) (

(/) (/) (/) (/)

(/) (

(/) (/) (/)

(/) (/) (/)

() :

() *

BMI

BMI

/ (/) / (/)

BMI

≥ / / / ≤ /

() /

(/) (/) (/) (/)*

() /

(/) (/) (/) (/)

(/) (/) (/) (/)

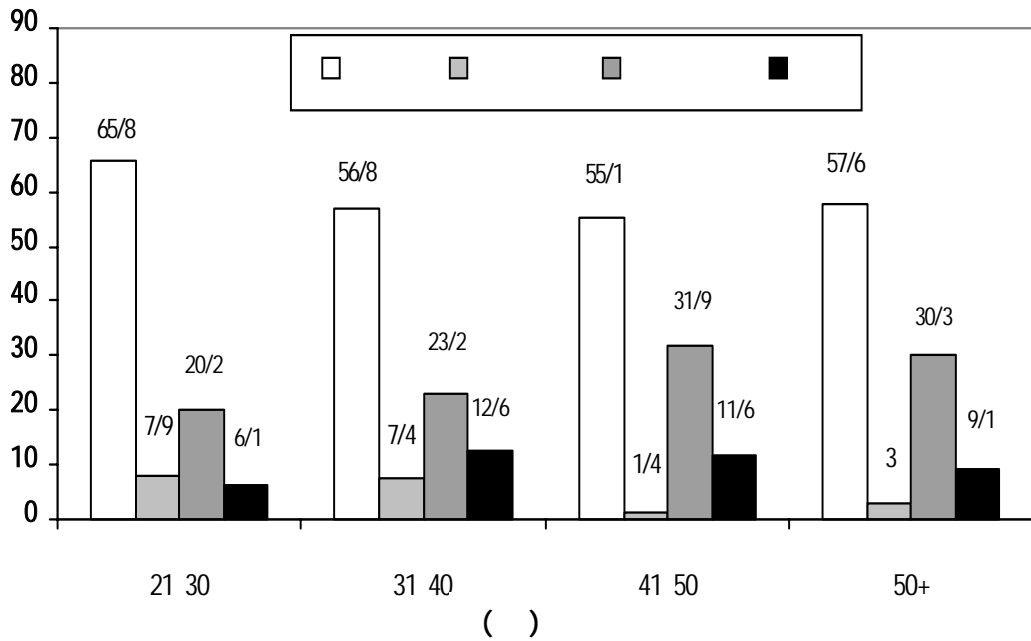
BMI

(P< /)

() *

.(

/ / /)



BMI

:

(Wasting)

(Underweight)

(Stunting)

/ /

BMI

() () ()

.()

(/)

BMI

BMI

()

()

()

/

()

/)

/ /

/) .() (

.(

()

()

) () () . ()

.() (

.() ()

.()

()

) (

(

.()

.()

References:

1. Gulliford MC, Mahabir D, Rocke B, et al. Overweight, obesity and skinfold thicknesses of children of African or Indian descent in Trinidad and Tobago. *Int J Epidemiol* 2001; 30: 989-98.
2. Brown KH, Solomons NW. Nutritional problems of developing countries. *Infect Dis Clin North Am* 1991; 5: 297-317.
3. Rice AL, Sacco L, Hyder A, et al. Malnutrition as an underlying cause of childhood death associated with infectious diseases in developing countries. *Bulletin of the World Health Organization* 2000; 78: 1207-21.
4. Soekirma, Hardinsyah, Jus'at I, Jabari AB. Regional study of nutritional status of urban primary school children. 2. West Jakarta and Bogar, Indonesia. *Food Nutr Bull* 2002; 23: 31-40.
5. Popkin BM, Paeratakul S, Ge K, et al. Body weight patterns among the Chinese: results from the 1989 and 1991 China health and nutrition survey. *Am J Public Health* 1995; 85: 690-4.
6. Florentino RF, Villavieja GM, Lana RD. Regional study of nutritional status of urban primary school children .1. Manila, Philippines. *Food Nutr Bull* 2002; 23: 24-30.
7. Tee ES, Khor SC, Ooi HE, et al. Regional study of nutritional status of urban primary school children .3. Kuala Lumpur, Malaysia. *Food Nutr Bull* 2002; 23: 41-7.
8. Dorosty AR, Siassi F, Reilly JJ. Obesity in Iranian children. *Arch Dis Child* 2002; 87: 388-91.

10. Onis MD, Frongillo EA, Blossner M. Is malnutrition declining? An analysis of changes in level of child malnutrition since 1980. *Bulletin of the World Health Organization* 2000; 78: 1222-33.
11. World Health Organization. *Physical status: the use and interpretation of anthropometry*. Geneva: WHO, 1995.
12. Kuczmarski RJ, Ogden CL, Guo SS, et al. 2000 CDC growth charts for the United States: Methods and development. *National Center for Health Statistics. Vital Health Stat* 11(246). 2002.
13. Must A, Dallal GE, Dietz WH. Reference data for obesity: 85th and 95th percentiles of body mass index (Wt/ht²) and triceps skinfold thickness. *Am J Clin Nutr* 1991; 53: 839-46.
14. Shils ME, Olson JA, Shike M, et al. *Modern nutrition in health and disease*. 9th ed. Maryland: LWW, 1999.
15. Allen L, Gillespie S. What works? A review of efficacy and effectiveness of nutrition interventions. United Nations administrative committee on coordination / subcommittee on nutrition, Manila: Geneva in collaboration with the Asian Development Bank; 2001.
20. Rogol AD, Clarck PA, Roemmich JN. Growth and pubertal development in children and adolescents: effect of diet and physical activity. *Am J Clin Nutr* 2000; 72 Suppl: 521-8.
22. Suzana S, Earland J, Suriah AR, et al. Social and health factors influencing poor nutritional status among rural elderly Malays. *J Nutr Health Aging* 2002; 6: 363-9.