



( )

### PCR

\*

\*\*

PCR

: \_\_\_\_\_

: \_\_\_\_\_

PCR

SrRNA

IgM

PCR

( / )

( / )

: \_\_\_\_\_

IgM

PCR

( )

PCR

: \_\_\_\_\_

SrRNA

PCR

: \_\_\_\_\_

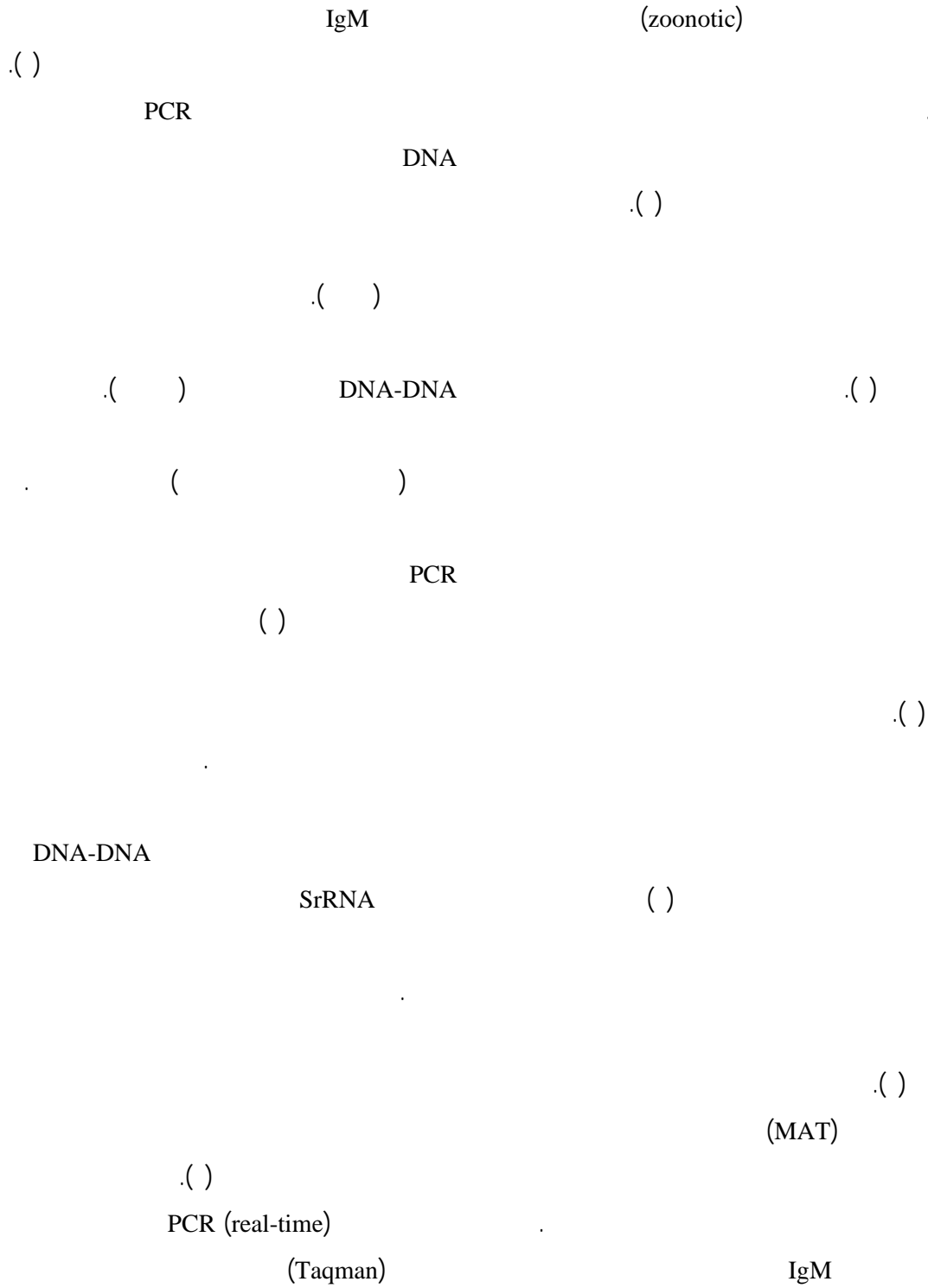
// :

// :

\*

:

\*\*



<sup>2</sup> Polymerase Chain Reaction

<sup>1</sup> Microscopic Agglutination Test

/

/

( )

B

PCR

SrRNA

.( )

SrRNA

SrRNA

PCR

/ ± /

PCR

DNA

»

PCR

«

DNA

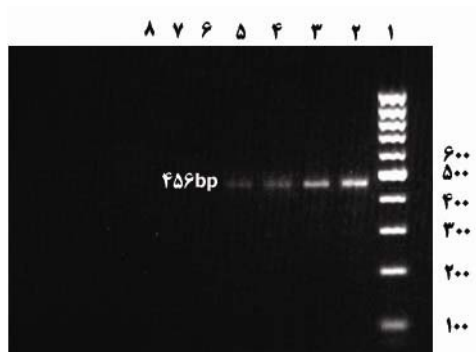
( )

DNA

<sup>3</sup> DNA Gyrase subunit B encoding gene

: ( )  
 PH / EDTA] L6-lysis buffer  
 TritonX- (fluka ) GUSCN  
 ( ) [(merck )  
 Tris-Hcl GUSCN) L2-wash buffer  
 PCR Techne-TC ( / PH /  
 PCR mixture ( ) k  
 (Genekam) DNA DNA DNA  
 PCR  
 PCR TBE DNA  
 bp DNA (Genekam )  
 PCR DNA PCR  
 ) DNA (Oligo5 )  
 PCR ( SrRNA bp  
 DNA :  
 L16SF:5'-CACCAAGGCGACGATCGGTAGC-3'  
 L16SR:5'-CAAGTCGCCTTCGCCACTGGTG-3'  
 PCR / PCR  
 DNA Taq DNA  
 : dNTP MgCl  
 DNA PCRbuffer10X  
 IgM PCR  
 SERION-ELISA Classic Leptospira

( )



شکل ۱: الکتروفورز محصول PCR، (۱) مارکر 100bp (۲) ۱ ng (۳) ۱۰۰ pg (۴) ۱۰ pg (۵) ۱۰۰ fg (۶) ۱۰ fg (۷) بدون DNA (۸)

PCR

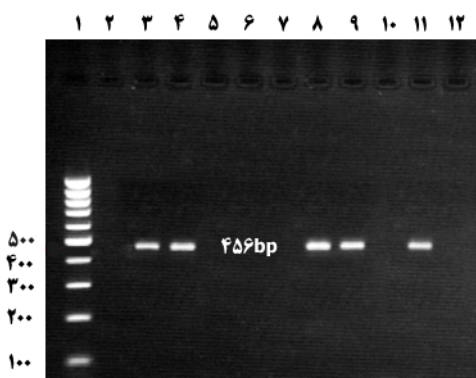
PCR

( / )

( )

DNA

bp



شکل ۲: الکتروفورز محصول PCR نمونه‌های سرمی (۱) مارکر 100bp (۲) شاهد منفی (۳) شاهد مثبت (۴.۸.۹.۱۱) نمونه‌های سرمی مثبت لبتوسپیرو (۵.۶.۷.۱۰) نمونه‌های سرمی منفی لبتوسپیرو.

IgM

Institut Virion / Serion GmbH

- L. Pomona : Leptospira interrogans
- L. copenhagenil L. icterohaemorrhagiae
- L. grippityphosa L. Bratislava L. canicola
- L. bataviae L. sejroe L. hebdomadis
- L. hardjo L. tarassovi

IgM

(SERION Rheumatoid )

Factor Absorbent Z

IgM

(> U/ml)

bp

-

SrRNA

( NCBI )

(Generunner)

bp

PCR

DNA

/

PCR

PCR

IgM

( )

.( )

IgM PCR :

PCR		
		IgM
( / )	( / )	( / )*
( / )	( / )	( / )
( )	( / )	( / )

\*اعداد به صورت (درصد) تعداد می باشند.

PCR

: / ± / PCR

: / ± /

PCR

MAT

( )

PCR ( / )

PCR

PCR

( / ) ( / )

CSF

PCR

.( )

/ /

---

MAT  
PCR

. ( )

- . ( ) PCR

PCR PCR . ( ) SrRNA S  
LipL bp real-time PCR

(Merien)

. ( ) SrRNA bp

DNA

. ( )

PCR G<sub>2</sub> G<sub>1</sub>

(L.Kirschneri)

/ /

Light cycler Taqman

PCR (real-time) . ( )

. ( )

PCR

. ( )

DNA

PCR

. ( )

SrRNA

B

DNA PCR

.( )

PCR

.( )

PCR

.( )

SSCP

.( )

( / )

.( )

.( )

.( )

IgM

IgM

(Dengue)

/

.( )

.( )

<sup>4</sup> Single-Strand Conformation Polymorphism Analysis



	MAT	MAT
PCR	( )	( )
	PCR	IgM
	PCR	
	( )	PCR
	PCR	( )
	( )	( )

## References:

1. World Health Organization. Leptospirosis worldwide. *Wkly Epidemiol Rec* 1999; 76: 109–16.
2. Bharti AR, Nally JE, Ricaldi JN, et al. Leptospirosis: A zoonotic disease of global importance. *Lancet Infect Dis* 2003; 3:757–71.
3. Ganoza CA, Matthias MA, Collins-Richards D, et al. Determining risk for severe leptospirosis by molecular analysis of environmental surface waters for pathogenic *Leptospira*. *PLoS Med* 2006; 3:e308.
4. Vinetz JM. Leptospirosis. *Curr Opin Infect Dis* 2001; 14: 527-38.
5. Levett, PN. *Leptospira* and *Leptonema*. Murray PR, Baron EJ, Jorgensen JH, et al. Editors. In: *Manual of Clinical Microbiology*. Washington, DC: American Society for Microbiology 2003, 929–36.
6. Bajani MD, Ashford DA, Bragg SL, et al. Evaluation of four commercially available rapid serologic tests for diagnosis of leptospirosis. *J Clin Microbiol* 2003;4: 803-9.
7. Brown PD, Gravekamp C, Carrington DG, et al. Evaluation of the polymerase chain reaction for early diagnosis of leptospirosis. *J Med Microbiol* 1995; 43: 110-4.
8. Merien F, Baranton G, Perolat P. Comparison of polymerase chain reaction with microagglutination test and culture for diagnosis of leptospirosis. *J Infect Dis* 1995;172: 281-5.

9. Slack AT, Symonds ML, Dohnt MF, Smythe LD. Identification of pathogenic *Leptospira* species by conventional or real-time PCR and sequencing of the DNA gyrase subunit B encoding gene. *BMC Microbiol* 2006;6:95.
10. Romero EC, Yasuda PH. Molecular characterization of *Leptospira* sp. strains isolated from human subjects in Sao Paulo, Brazil using a polymerase chain reaction-based assay: a public health tool. *Mem Inst Oswaldo Cruz* 2006; 101: 373-8.
11. Smythe LD, Smith IL, Smith GA, et al. A quantitative PCR (TaqMan) assay for pathogenic *Leptospira* spp. *BMC Infect Dis* 2002;2: 13.
12. Bal AE, Gravekamp C, Hartskeerl RA, et al. Detection of leptospires in urine by PCR for early diagnosis of leptospirosis. *J Clin Microbiol* 1994;32: 1894-8.
13. Glenn T, Bavis R, Bollback J. DNA Extraction Protocols Using Silica. Laboratory of Molecular Systematics. MRC 534, MSC. Smithsonian Institution. Washington, DC. 20560. (Accessed October 10, 2007, at [http://www.uga.edu/srel/DNA\\_Lab/TSilicaDNA.rtf](http://www.uga.edu/srel/DNA_Lab/TSilicaDNA.rtf).)
14. Slack A, Symonds M, Dohnt M, et al. Evaluation of a modified Taqman assay detecting pathogenic *Leptospira* spp. against culture and *Leptospira*-specific IgM enzyme-linked immunosorbent assay in a clinical environment. *Diagn Microbiol Infect Dis* 2007;57: 361-6.
15. Merien F, Amouriaux P, Perolat P, Baranton G, Saint Girons I. Polymerase chain reaction for detection of *Leptospira* spp. in clinical samples. *J Clin Microbiol* 1992;30: 2219-24.
16. Gravekamp C, Van de Kemp H, Franzen M, et al. Detection of seven species of pathogenic leptospires by PCR using two sets of primers. *J Gen Microbiol* 1993;139: 1691-700.
17. Levett PN, Morey RE, Galloway RL, et al. Detection of pathogenic leptospires by real-time quantitative PCR. *J Clin Microbiol* 2005;54: 45-9.
18. de Abreu Fonseca C, Teixeira de Freitas VL, Calo Romero E, et al. Polymerase chain reaction in comparison with serological tests for early diagnosis of human leptospirosis. *Trop Med Int Health* 2006;11: 1699-707.
19. Levett PN. Leptospirosis. *Clin Microbiol Rev* 2001;14: 296-326.
20. Mansour-Ghanaei F, Sarshad A, Fallah MS, et al. Leptospirosis in Guilan, a northern province of Iran: assessment of the clinical presentation of 74 cases. *Med Sci Monit* 2005;11: CR219-23.
21. Bharti AR, Nally JE, Ricaldi JN, et al. Leptospirosis: a zoonotic disease of global importance. *Lancet Infect Dis* 2003; 3:757-71.
22. Ashford DA, Kaiser RM, Spiegel RA, et al. Asymptomatic infection and risk factors for leptospirosis in Nicaragua. *Am J Trop Med Hyg* 2000;63: 249-54.
23. Silva MV, Camargo ED, Batista L, et al. Behaviour of specific IgM, IgG and IgA class antibodies in human leptospirosis during the acute phase of the disease and during convalescence. *Am J Trop Med Hyg* 1995; 98:268-72.
24. Winslow WE, Merry DJ, Pirc ML, et al. Evaluation of a commercial enzyme-linked immunosorbent assay for detection of immunoglobulin M antibody in diagnosis of human leptospiral infection. *J Clin Microbiol* 1997;35: 1938-42.
25. Ooteman MC, Vago AR, Koury MC. Evaluation of MAT, IgM ELISA and PCR methods for the diagnosis of human leptospirosis. *J Microbiol Methods* 2006; 65: 247-57.
26. Glyn Davies F, Martin V. Recognizing rift valley fever. *FAO animal health Manual. Food and Agriculture Organization of The United Nations. Rome, 2003.* (Accessed October 10, 2007, at <http://www.fao.org/DOCREP/006/Y4611E/Y4611E00.HTM>.)