



()

PCR

*

**

PCR

: _____

: _____

PCR

SrRNA

IgM

PCR

(/)

(/)

: _____

IgM

PCR

()

PCR

: _____

SrRNA

PCR

: _____

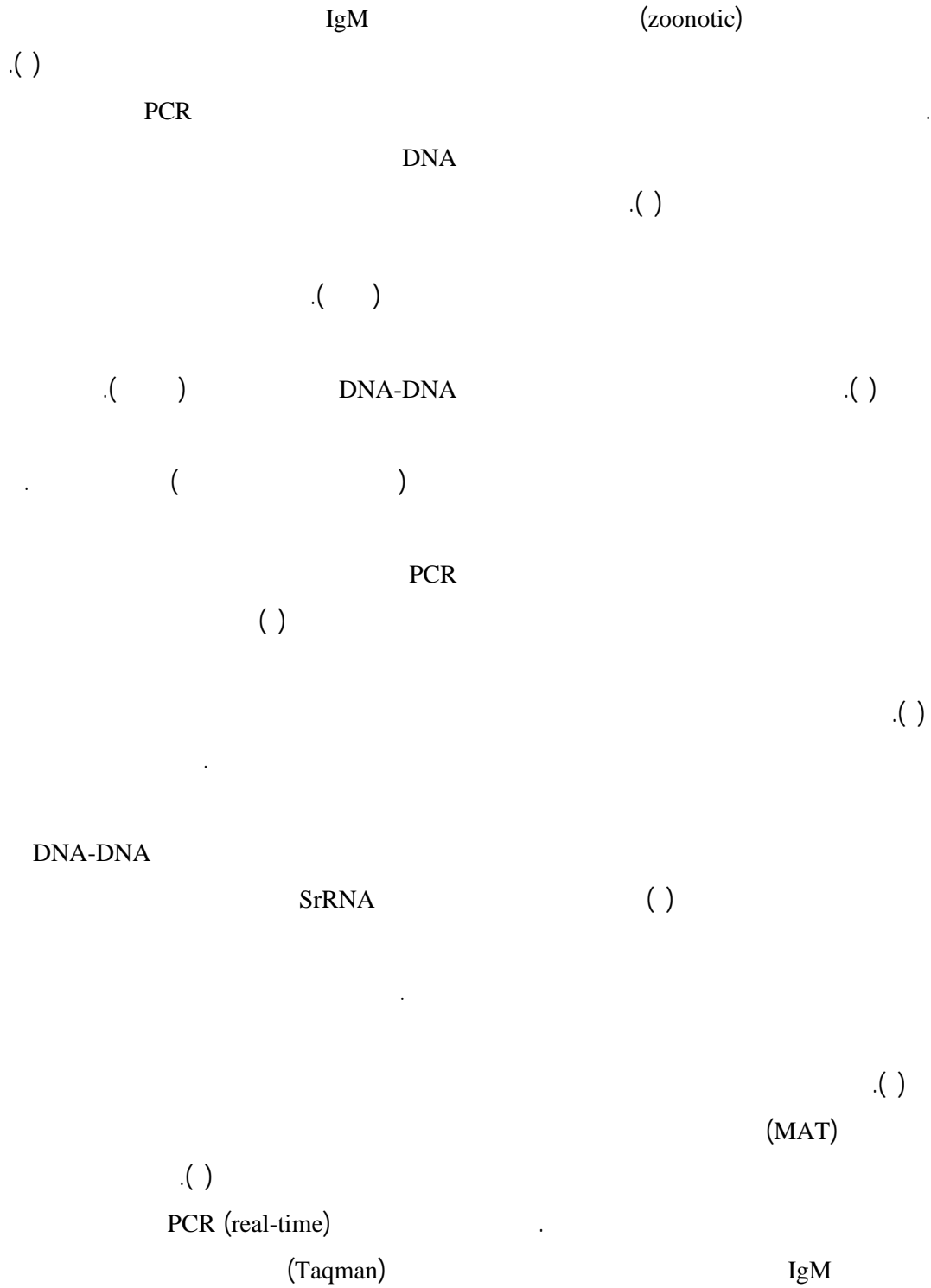
// :

// :

*

:

**



² Polymerase Chain Reaction

¹ Microscopic Agglutination Test

/

/

()

B

PCR

SrRNA

.()

SrRNA

SrRNA

PCR

/ ± /

PCR

DNA

»

PCR

«

DNA

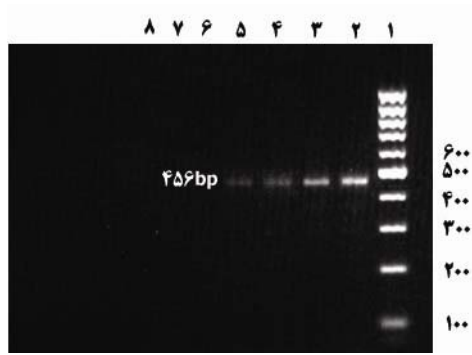
DNA

()

³ DNA Gyrase subunit B encoding gene

: ()
 PH / EDTA] L6-lysis buffer
 TritonX- (fluka) GUSCN
 () [(merck)
 Tris-Hcl GUSCN) L2-wash buffer
 PCR Techne-TC (/ PH /
 PCR mixture () k
 (Genekam) DNA DNA DNA
 PCR
 PCR
 TBE DNA
 bp DNA
 (Genekam)
 PCR
 PCR DNA (Oligo5)
 PCR (SrRNA
 bp
 DNA :
 L16SF:5'-CACCAAGGCGACGATCGGTAGC-3'
 L16SR:5'-CAAGTCGCCTTCGCCACTGGTG-3'
 PCR / PCR
 PCR DNA Taq DNA
 dNTP MgCl
 DNA PCRbuffer10X
 IgM PCR
 SERION-ELISA Classic Leptospira

.()



شکل ۱: الکتروفورز محصول PCR، (۱) مارکر 100bp (۲) ۱ ng (۳) ۱۰۰ pg (۴) ۱۰ pg (۵) ۱ pg (۶) ۱۰۰ fg (۷) ۱۰ fg (۸) بدون DNA

PCR

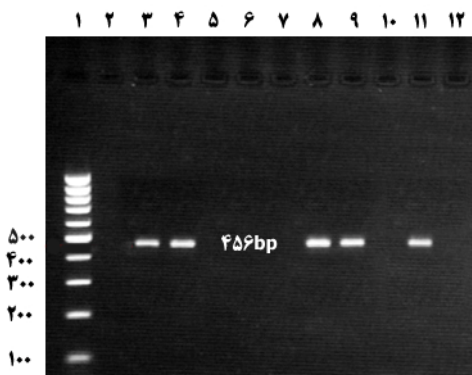
PCR

(/)

.()

DNA

bp



شکل ۲: الکتروفورز محصول PCR نمونه‌های سرمی (۱) مارکر 100bp (۲) شاهد منفی (۳) شاهد مثبت (۴.۸.۹.۱۱) نمونه‌های سرمی مثبت لیتوسپیرا (۵.۶.۷.۱۰) نمونه‌های سرمی منفی لیتوسپیرا.

IgM

Institut Virion / Serion GmbH

L. Pomona : Leptospira interrogans
 L. copenhagenil L. icterohaemorrhagiae
 L. grippotyphosa L. Bratislava L. canicola
 L. bataviae L. sejroe L. hebdomadis
 L. hardjo L. tarassovi

IgM

(SERION Rheumatoid)

Factor Absorbent Z

IgM

(> U/ml)

bp

-

SrRNA

(NCBI)

(Generunner)

bp

PCR

DNA

/

PCR

PCR

IgM

()

()

IgM PCR :

PCR		
		IgM
(/)	(/)	(/)*
(/)	(/)	(/)
()	(/)	(/)

*اعداد به صورت (درصد) تعداد می باشند.

PCR

: / ± / PCR

: / ± /

PCR

MAT

()

PCR (/)

PCR

PCR

(/)

(/)

CSF

PCR

()

/

/

MAT

PCR

.()

-

.()

PCR

PCR

PCR

.()

SrRNA

S

LipL

bp

real-time

PCR

.()

(Merien)

SrRNA

bp

DNA

.()

G₂ G₁

PCR

(L.Kirschneri)

/ /

Light cycler Taqman

PCR (real-time)

.()

.()

PCR

.()

DNA

PCR

.()

SrRNA

B

DNA

PCR

.()

PCR

.()

PCR

.()

SSCP

(/)

.()

.()

.()

.()

IgM

IgM

(Dengue)

.()
()

⁴ Single-Strand Conformation Polymorphism Analysis

9. Slack AT, Symonds ML, Dohnt MF, Smythe LD. Identification of pathogenic *Leptospira* species by conventional or real-time PCR and sequencing of the DNA gyrase subunit B encoding gene. *BMC Microbiol* 2006;6:95.
10. Romero EC, Yasuda PH. Molecular characterization of *Leptospira* sp. strains isolated from human subjects in Sao Paulo, Brazil using a polymerase chain reaction-based assay: a public health tool. *Mem Inst Oswaldo Cruz* 2006; 101: 373-8.
11. Smythe LD, Smith IL, Smith GA, et al. A quantitative PCR (TaqMan) assay for pathogenic *Leptospira* spp. *BMC Infect Dis* 2002;2: 13.
12. Bal AE, Gravekamp C, Hartskeerl RA, et al. Detection of leptospires in urine by PCR for early diagnosis of leptospirosis. *J Clin Microbiol* 1994;32: 1894-8.
13. Glenn T, Bavis R, Bollback J. DNA Extraction Protocols Using Silica. Laboratory of Molecular Systematics. MRC 534, MSC. Smithsonian Institution. Washington, DC. 20560. (Accessed October 10, 2007, at http://www.uga.edu/srel/DNA_Lab/TSilicaDNA.rtf.)
14. Slack A, Symonds M, Dohnt M, et al. Evaluation of a modified Taqman assay detecting pathogenic *Leptospira* spp. against culture and *Leptospira*-specific IgM enzyme-linked immunosorbent assay in a clinical environment. *Diagn Microbiol Infect Dis* 2007;57: 361-6.
15. Merien F, Amouriaux P, Perolat P, Baranton G, Saint Girons I. Polymerase chain reaction for detection of *Leptospira* spp. in clinical samples. *J Clin Microbiol* 1992;30: 2219-24.
16. Gravekamp C, Van de Kemp H, Franzen M, et al. Detection of seven species of pathogenic leptospires by PCR using two sets of primers. *J Gen Microbiol* 1993;139: 1691-700.
17. Levett PN, Morey RE, Galloway RL, et al. Detection of pathogenic leptospires by real-time quantitative PCR. *J Clin Microbiol* 2005;54: 45-9.
18. de Abreu Fonseca C, Teixeira de Freitas VL, Calo Romero E, et al. Polymerase chain reaction in comparison with serological tests for early diagnosis of human leptospirosis. *Trop Med Int Health* 2006;11: 1699-707.
19. Levett PN. Leptospirosis. *Clin Microbiol Rev* 2001;14: 296-326.
20. Mansour-Ghanaei F, Sarshad A, Fallah MS, et al. Leptospirosis in Guilan, a northern province of Iran: assessment of the clinical presentation of 74 cases. *Med Sci Monit* 2005;11: CR219-23.
21. Bharti AR, Nally JE, Ricaldi JN, et al. Leptospirosis: a zoonotic disease of global importance. *Lancet Infect Dis* 2003; 3:757-71.
22. Ashford DA, Kaiser RM, Spiegel RA, et al. Asymptomatic infection and risk factors for leptospirosis in Nicaragua. *Am J Trop Med Hyg* 2000;63: 249-54.
23. Silva MV, Camargo ED, Batista L, et al. Behaviour of specific IgM, IgG and IgA class antibodies in human leptospirosis during the acute phase of the disease and during convalescence. *Am J Trop Med Hyg* 1995; 98:268-72.
24. Winslow WE, Merry DJ, Pirc ML, et al. Evaluation of a commercial enzyme-linked immunosorbent assay for detection of immunoglobulin M antibody in diagnosis of human leptospiral infection. *J Clin Microbiol* 1997;35: 1938-42.
25. Ooteman MC, Vago AR, Koury MC. Evaluation of MAT, IgM ELISA and PCR methods for the diagnosis of human leptospirosis. *J Microbiol Methods* 2006; 65: 247-57.
26. Glyn Davies F, Martin V. Recognizing rift valley fever. *FAO animal health Manual. Food and Agriculture Organization of The United Nations. Rome, 2003.* (Accessed October 10, 2007, at <http://www.fao.org/DOCREP/006/Y4611E/Y4611E00.HTM>.)